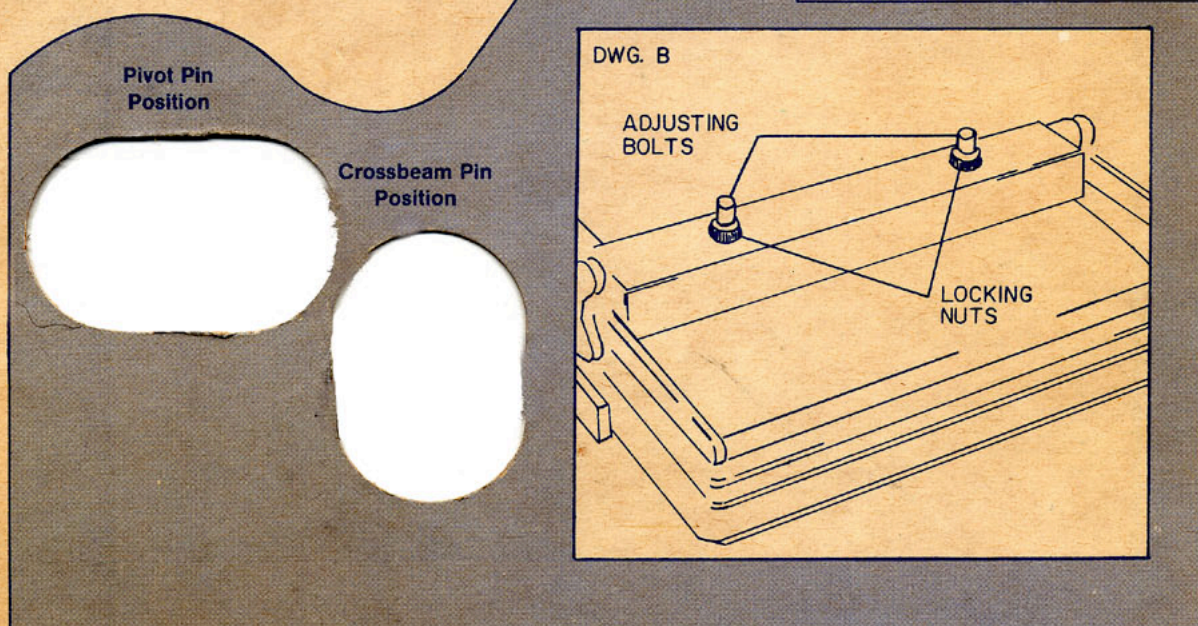
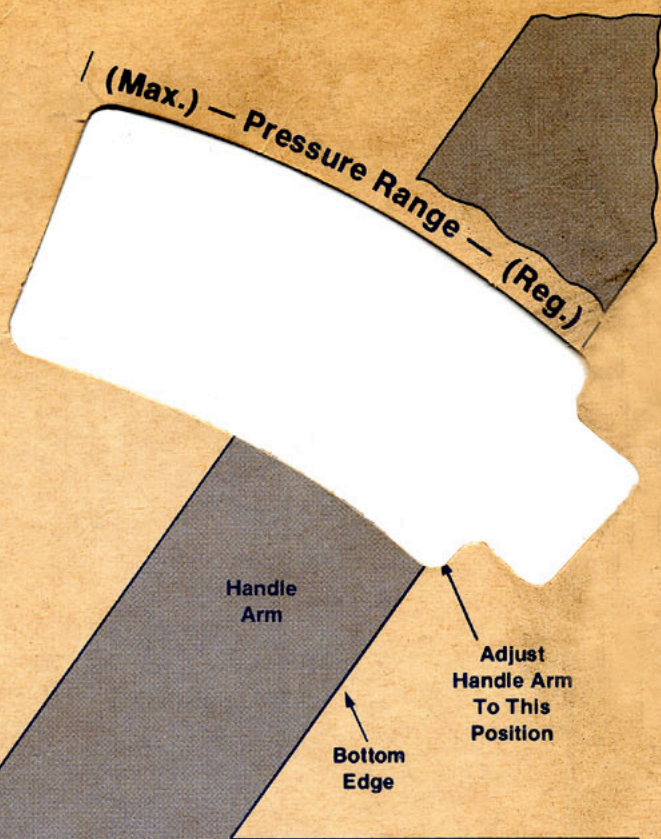
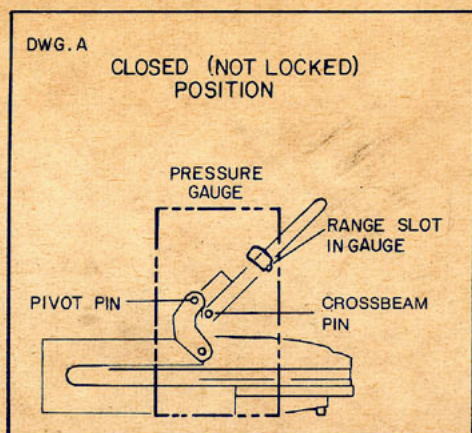


# Seal Pressure Template

For  
Jumbo 160 & 160 M  
Commercial 210 & 210M  
Masterpiece 500T  
Press Models



## DIRECTIONS

### STEP 1. Prepare Template

- This template is ready for immediate use on Masterpiece Model 500T. See cutting lines at bottom and shorten as required for other presses.

### STEP 2. Determine if adjustment is necessary.

- Put press handle in closed (but not locked) position. (See Dwg. A)
- Stand this Pressure Template next to side of press so bottom edge of template is level with table surface. Line up Crossbeam Pin and Pivot Pin with proper hole in Template. (See Dwg. A)

—Adjustment is necessary if bottom edge of Handle Arm is below the **Seat Range** in Template.

### STEP 3. Pressure adjustment.

- Locate Adjusting Screw Assemblies (one on Jumbo). (See Dwg. B)
- With Pressure Template removed, pull the handle to close and lock the press top fully.
- Loosen large knurled Locking Nuts (one on Jumbo) one or two full turns. (See Dwg. B)
- Return press to closed position (see "b" above) and reinstall Pressure Template. (See "c" above.)
- Turn Adjusting Bolt until bottom edge of Handle Arm is aligned with point "R" (Regular) in the **Pressure Range** as shown above. The Handle Arm is raised by turning the Adjusting Bolt counterclockwise.

NOTE: The bottom edge of the Handle Arm should never be adjusted beyond point "M" (Maximum) in the **Pressure Range**.

On Masterpiece and Commercial press models, repeat the adjustment on opposite side of press using this Template.

- Lock the press closed and tighten large Locking Nuts (one on Jumbo) by hand, finger tight.

(By opening and closing the press one or two times, all of the suspension assemblies will "seat" themselves automatically. Reapplication of this Pressure Template will show that the Handle Arm has positioned itself properly in the **Seat Range**.)

—The adjustment is now complete and the press is ready for regular operation. For thicker work, ( $\frac{1}{2}$ " to 1"), the following adjustments should be made:

### PRESSURE ADJUSTMENT FOR MATERIALS UP TO 1" THICK

**STEP 1. Prepare Template**—same as shown above.

**STEP 2. Determine if adjustment is necessary.**

- Place the thick work on the sponge pad in your unheated press after removing all other boards, masonite, etc.
- Same as shown above.

**STEP 3. Pressure adjustment**—same as shown above.

—After completing the processing of thicker work, be sure to return the press to the regular pressure setting.